



RUBA Thermoplast AG

**your top cap supplier
&
professional toolmaker**



Modular structure of the tools

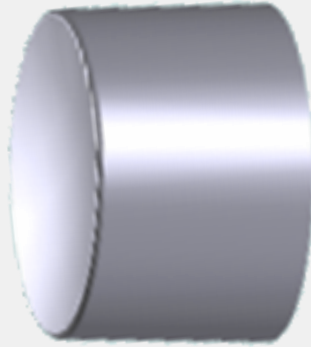


Each tool consists of two tool halves, a fixed and a movable side.

Open nozzles are used for caps molded on the inside and RUBA Thermoplast AG uses a needle valve system for caps molded on the outside.

Internally molded cap

Movable
plate
&
MyCap
plate



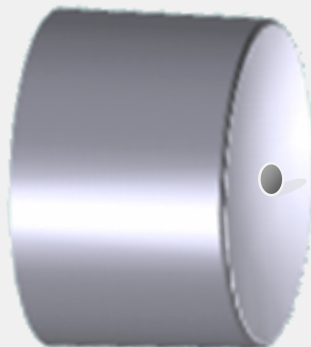
Fixed plate
nozzle side

Open nozzle
with hot
runner

injection
unit

Externally molded cap

Movable
plate



Fixed plate
nozzle side

Valve gate
with hot
runner

injection
unit



Performance of RUBA tools for caps

Description	Internally molded cap	Maximum annual output	Externally molded cap	Maximum annual output
	Number of cavities	Mio.	Number of cavities	Mio.
Tool	4	4 to 6	4	5 to 6
Tool	8	7 to 11	8	9 to 13
Tool	12	11 to 17	12	14 to 19
Tool	16	15 to 23	16	18 to 25
Tool	24	23 to 34	24	27 to 38

Performance of RUBA tools for tube shoulders

Description	MyShoulder by RUBA	Maximum annual output	Externally molded cap	Maximum annual output
	Number of cavities	Mio.	Number of cavities	Mio.
Tool	2	4 to 6	4	5 to 6
Tool	8	7 to 11	8	9 to 13
Tool	12	11 to 17	12	14 to 19
Tool	16	15 to 23	16	18 to 25
Tool	24	23 to 34	24	27 to 38



MyCap by RUBA®

exterior shapes

Description (<i>MyCap by RUBA®</i>)	Internally molded cap	Guide price
	Number of cavities	Euro
Exterior shape	8	8'500
Exterior shape	12	10'000
Exterior shape	24	13'000

MyShoulder by RUBA®

exterior shapes

Description (<i>MyShoulder by RUBA</i>)	Internally molded cap	Guide price
	Number of cavities	Euro
Exterior shape	8	8'500
Exterior shape	12	10'000
Exterior shape	24	13'000

Delivery time: 2 to 3 months complete tool

Approval with 2D and 3D drawing

Initial sampling report and 100 pieces of samples in white color

Quality level QL_00 to QL_04 depending on customer requirements